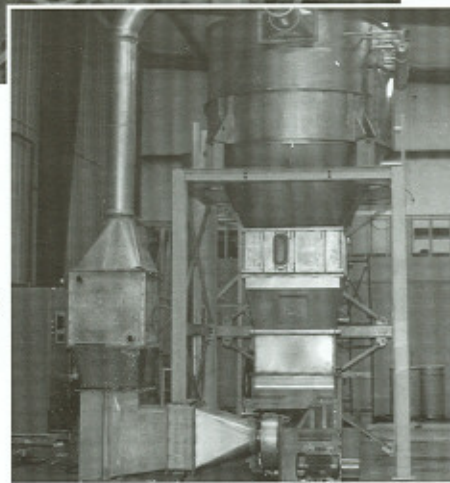
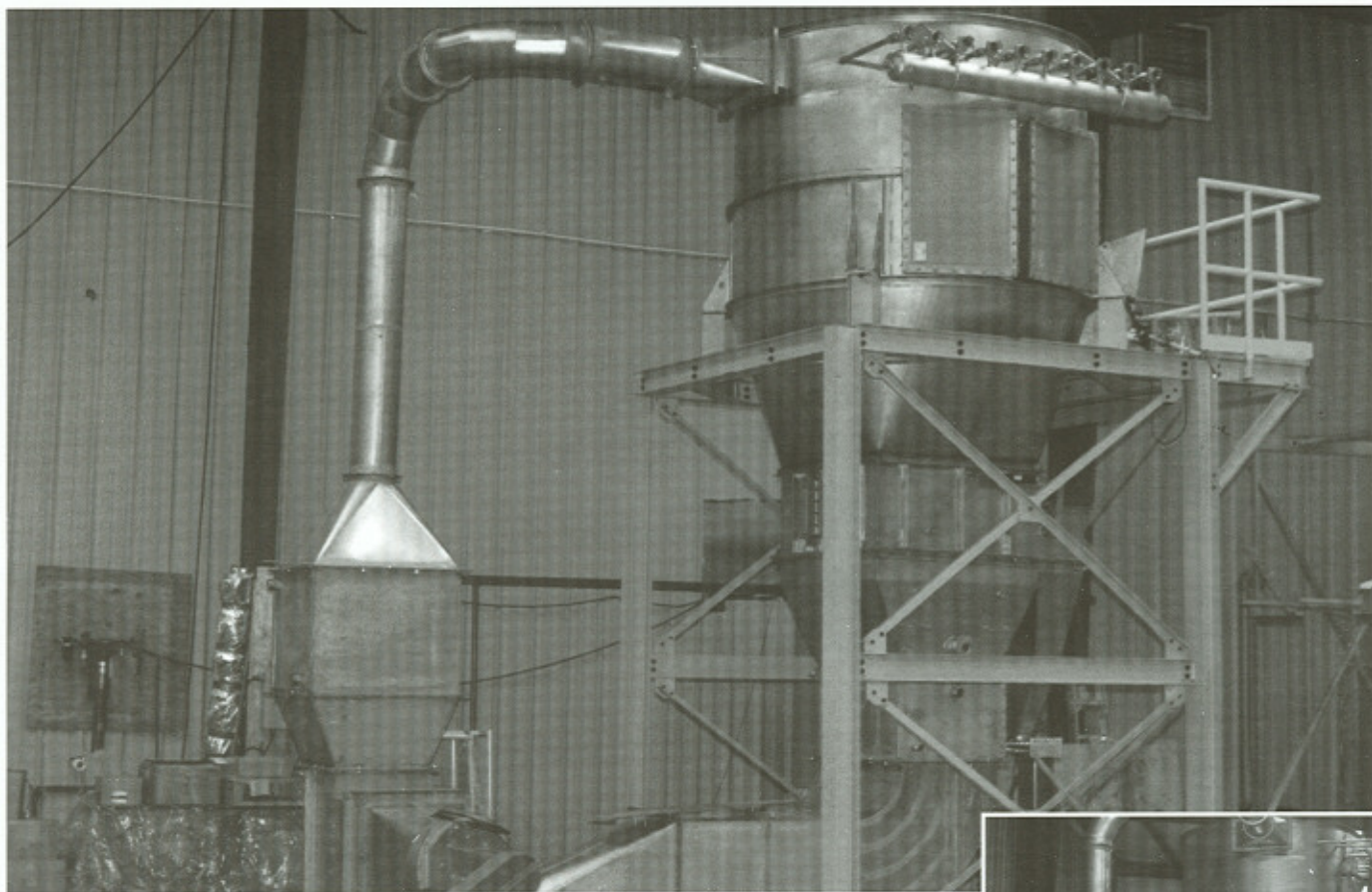


APPLIED CHEMICAL TECHNOLOGY™

THE WORLD LEADER IN PROCESS EQUIPMENT DESIGN

A photograph of a large industrial fluid bed system. The system consists of a tall, cylindrical stainless steel vessel supported by a complex metal frame. A large vertical pipe is attached to the side of the vessel. The background shows a factory setting with other industrial equipment and a window.

**WINDSTORM™
FLUID BED SYSTEMS**



Windstorm™ – Complete Fluidization Systems from Applied Chemical Technology™

The Windstorm™ Fluid Bed System is the versatile, low cost solution for batch processing and production. Windstorm™ is a complete process system, with a blower, ductwork, heating/cooling system, integral dust collector, explosion protection and more. Its recirculating design allows inert gas or air operation, and the compact layout is ideally suited for sites with limited space. Windstorm™ Fluid Bed Systems also feature

ACT's exclusive on-demand discharge door; batches unload

at the touch of a button without shutting down the system.

Whatever your needs, the Windstorm™ Fluid Bed System is the perfect way to process industrial chemicals, foods, fine cosmetics, pharmaceuticals and more.

ACT's Windstorm™ Fluid Bed Systems support a wide range of process applications including:

Coating
Drying
Reacting

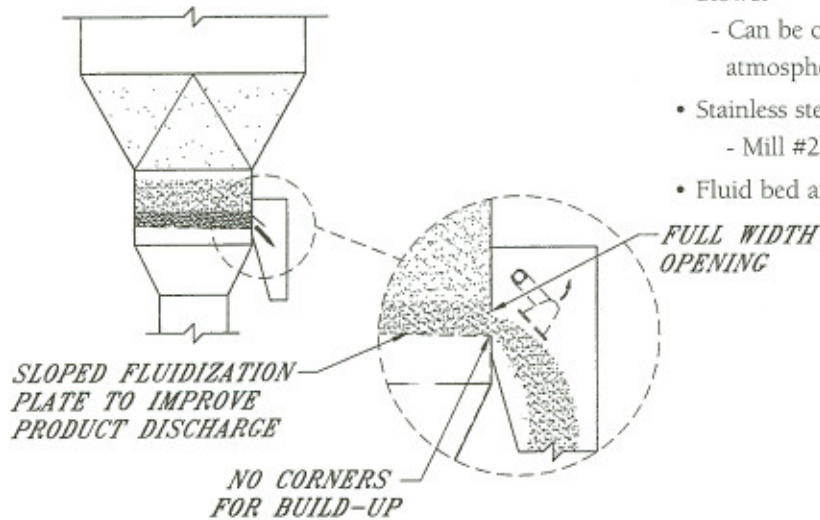
Granulation
Heating
Spray Drying

Agglomeration
Cooling
Impregnating

Mixing
Decontaminating

Standard Features (All Models)

- Steam/coolant coil for temperature control up to 300° F
- Condensing coil for moisture removal or solvent recovery
- Mist eliminator
- Explosion protection
- Recirculating system
 - Inert gas or air operation
- Integral dust collector with polyester bag filters
 - 99% filtration efficiency for particles larger than 1 micron
- Pulse jet bag cleaning system
- Sealed discharge hopper with airlock
- On demand product discharge door
 - Push button operation
 - Air actuated
- Removable screen with your choice of open area
- Air flow and temperature controls
- Full instrumentation
 - Inlet air temperature
 - Exit air temperature
 - Fluidization air velocity indicator
 - Differential pressure gauge for filter and screen
- Complete ductwork for contained air
- Blower
 - Can be configured for positive, negative or atmospheric pressure
- Stainless steel construction
 - Mill #2b finish
- Fluid bed and ductwork disassemble for easy cleaning



Optional Features and Accessories

- Alternate distributor plates (wide range of open areas available)
- Automation
 - PLC automation package complete with graphic interface for control and monitoring
 - System tailored to fit specific customer needs
- Cartridge filter system
- Custom filter materials
- Complete spray system accessories
 - Pumps, filters, nozzles, piping, etc.
 - Top, bottom or side mounted
- Custom finish
- Conversion accessories for low, medium or high product density configurations
- Larger capacity discharge hopper
- Custom modifications to design, construction materials or instrumentation

Windstorm™ System Dimensions and Technical Specifications (Standard Models)

Model#	H*	W*	L*	DH**	# of Bags (Cloth Area)	Air: Cloth Ratio	Typical Batch Size†	Hopper Capacity
8-181(L,M,H)***	620 cm (244")	450 cm (177")	572 cm (225")	635 mm (25")	30 (181 ft ²)	7:1	73 kg (160 lbs.)	0.15 m ³ (5.3 ft ³)
16-361(L,M,H)	681 cm (268")	505 cm (199")	638 cm (251")	990 mm (39")	80 (361 ft ²)	7:1	145 kg (320 lbs.)	0.30 m ³ (10.6 ft ³)
36-814(L,M,H)	747 cm (294")	620 cm (244")	912 cm (359")	1372 mm (54")	181 (814 ft ²)	7:1	318 kg (700 lbs.)	0.68 m ³ (24 ft ³)



* Complete system, including operating and maintenance clearances. All dimensions are subject to change and are given for space estimation only.

** Disengaging Height (vertical dimension of expansion zone).

*** Indicates product density configuration: L=Low, M=Medium, H=High. All figures apply to all configurations (see next note).

† For comparison only. "L" configuration assumes product density of 30 lbs./ft³, "M" configuration assumes product density of 60 lbs./ft³, "H" configuration assumes product density of 90 lbs./ft³. Actual batch sizes will depend on your process and materials. ACT will test your materials to determine the fluidization conditions and system configuration best suited to your needs. Your materials, product and process will be kept strictly confidential. We offer signed secrecy agreements upon request.

Ordering Information

To order one of our standard fluid beds, or for more information about ACT services, including complete catalogs of ACT fluid beds and other process equipment, you may contact us by phone, post or e-mail.

Phone: 1-256-760-9600

Fax: 1-256-760-9638

Toll Free: 1-800-ACT-3217

e-mail: act@appliedchemical.com

Web site: <http://www.appliedchemical.com>

**APPLIED
CHEMICAL
TECHNOLOGY™**

*The World Leader in
Process Equipment Design.*

APPLIED CHEMICAL TECHNOLOGY,™ INC.

4350 Helton Drive

Florence, Alabama, USA 35630